

Relaxed performance guide

It's a Wonderful Life: A Live Radio Play

By Joe Landry



Saturday, December 18 at 2:00 pm

100 Spadina Crescent East

Persphone Theatre, Rawlco Radio Hall



This is Persephone Theatre.

These doors are the entrance.

Enter these doors and you will be in the box office.



You can buy your tickets from the box office.

Right at the door, you will have to show your proof of vaccination and ID.

Don't forget to bring a mask with you. You will need to wear your mask the whole time you are inside.

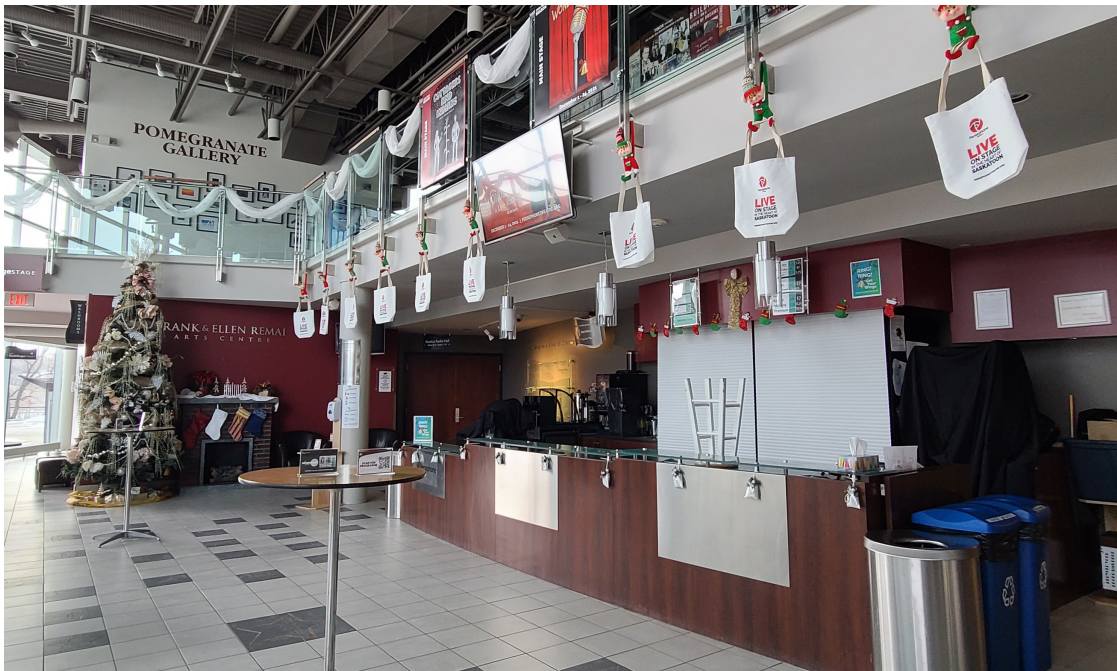


After you get your proof of vaccination and ID checked, you can enter the lobby.

There will be people handing out programme booklets with information about the show.

There is a QR code to scan with your phone to read a digital version of the programme.

You can go up the stairs or the ramp.



You can buy snacks and drinks from the concession stand.

Remember to keep your mask on and only remove it while actively eating or drinking.



If you want to go to the second floor, use the stairs or the elevator.



This is the elevator.



This is the way to the group washrooms.

There are two group washrooms near the back of the main floor available for you to use. One has urinals and the other does not. Signs will tell you with pictures which is which.

There are three single room washrooms you can use. There are two on the second floor and one on the main floor.

All bathrooms are marked with a blue circle.

Like this - ●

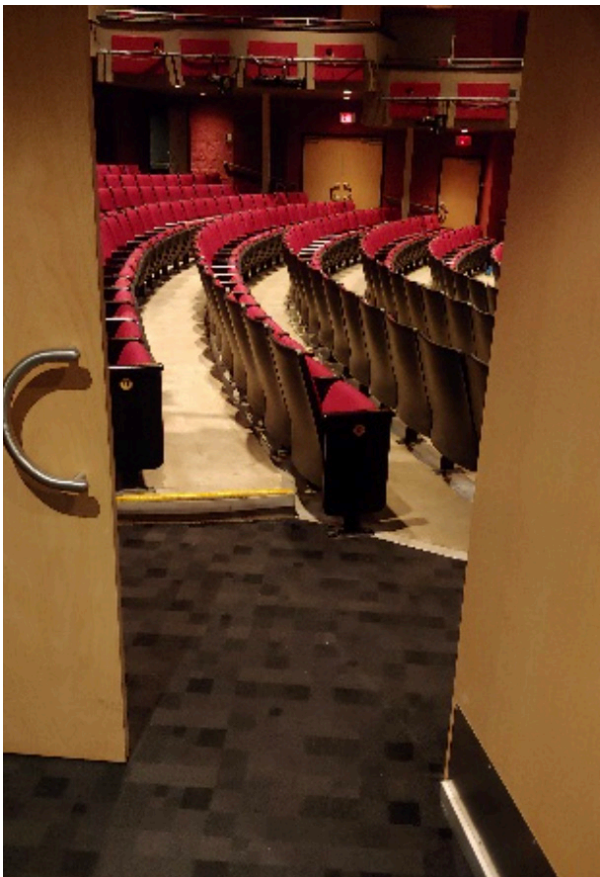


These are the doors to enter the theatre to watch the performance.

These doors will remain open during the performance and you are free to leave and come back any time.



This is the hallway to the theatre.



This is the door to the main floor of the theatre.



These are the rows of seats. Each row has a letter and each seat has a number.

If you need help finding your seat, please ask any of the volunteers wearing black and white clothes.

You can leave the theatre through the same door you entered.



This is Melanie.

She is the Front of House Manger.

Melanie, concession staff, or volunteers can help you find the chill out area or the washrooms.

About the Play

This show is about a radio station named WBFR Playhouse in New York City.

In the play you will see the actors at the radio station perform the radio play *It's a Wonderful Life*. This is what we call a play within a play.

The actors are playing the role of radio actors in 1946. These 5 actors play many different characters in the radio play.

When the actors change characters they change their facial expressions, voices, and body gestures.

The story takes place on Christmas Eve.

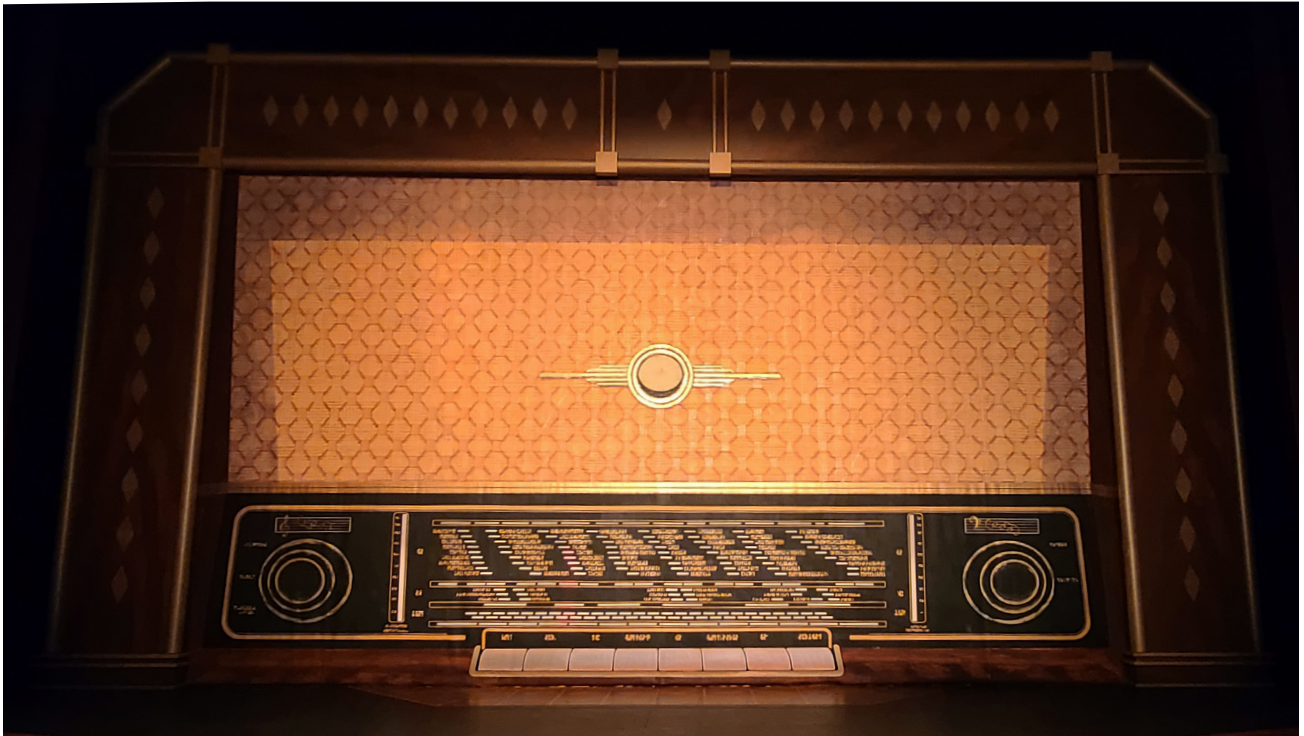
It's a Wonderful Life is a story about love, friends and the meaning of life.

George Bailey is the main character. He marries Mary Hatch. They have four kids together.

George always likes to help others in his community. He feels very sad after a big problem at his job. He thinks there is no solution to his problem and tries to jump off a bridge on Christmas Eve.

Clarence Oddbody, a guardian angel, comes to rescue George and shows him how he has impacted the lives of others and how different life would be for his wife, Mary, and his community of Bedford Falls if he had not been born.

George learns one person's life can have a big impact on everyone who knows them. Clarence helps George understand no one's life is insignificant or meaningless. He asks Clarence to let him go back to Bedford Falls to be with the people he loves.



This is the stage at the beginning of the show. It is a painted curtain.

The curtain is painted to look like a radio from the 1940s.



This is the stage when the painted curtain goes up.

The stage looks like a radio studio in the 1940s.



The lighting on the stage will change during the show.

Sometimes it will be dark. Sometimes it will be bright. Sometimes it will be colourful.

This is an example of a lighting change.



This is an example of a darker lighting change.



This is Robert.

He plays the role of radio actor Freddie Filmore.

This is what Robert looks like out of costume.



This is what Robert looks like on stage during the show.

He is dressed in the clothing fashion of the time period the play takes place.

Freddie Filmore is the radio announcer, and plays the parts of Henry Potter, Billy Bailey, Peter Bailey, and other small parts in the radio play.



This is Leon.

He plays the role of radio actor Jake Laurents.

This is what Leon looks like out of costume.



This is what Leon looks like on stage during the show.

He is dressed in the clothing fashion of the time period the play takes place.



This is what Leon looks at the beginning of the show.

He is dressed like he has just arrived at work. It is winter time and it is cold.

Jake Laurents plays the parts of George Bailey and Young George in the radio play.



This is Amanda.

They play the role of radio actor Sally Applewhite.

This is what Amanda looks like out of costume.



This is what Amanda looks like on stage during the show.

They are dressed in the clothing fashion of the time period the play takes place.



This is what Amanda looks at the beginning of the show.

They are dressed like they have just arrived at work. It is winter time and it is cold.

Sally Applewhite plays the parts of Mary Hatch, and Young Mary in the radio play.



This is Andrew.

He plays the role of radio actor Harry Heywood.

The character has the nickname "Jazzbo".

This is what Andrew looks like out of costume.



This is what Andrew looks like on stage during the show.

He is dressed in the clothing fashion of the time period in history the play takes place.



Sometimes Andrew wears a hat on stage.

Harry “Jazzbo” Heywood plays the parts of Harry Bailey, Young Harry, Clarence Oddbody, Sam Wainwright, and other small parts in the radio play.



This is Kristel.

She plays the role of radio actor Lana Sherwood .

This is what Kristel looks like out of costume.



This is what Kristel looks like on stage during the show.

She is dressed in the clothing fashion of the time period the play takes place.



This is what Kristel looks at the beginning of the show.

She is dressed like she has just arrived at work. It is winter time and it is cold.

Lana Sherwood plays the parts of Violet, Young Violet, Rose Bailey, and other small parts in the radio play.



This is Grahame.

He plays the role of a radio Foley Artist. A Foley Artist creates the sound effects in a radio play.

This is what Grahame looks like out of costume.



This is what Grahame looks like on stage during the show.


He is dressed in the clothing fashion of the time period the play takes place.

During and After the Play

During the performance the house lights will be on and the doors will be open.

You are welcome to leave or come back to your seat whenever you like.

You can leave the theatre during the performance to go to the washroom or to a chill out zone.

The chill out zone will be in the lobby. It will be marked by a yellow square. Like this - 

There will be soft furniture to sit on, books, and soft toys available.

The staff and volunteers will be happy to help you with directions to and from the chill out zone.

You will know the performance is over when the actors take a bow. After the performance you are free to go home.

**We would love to hear about your experience at
Persephone Theatre and what you thought of the
play.**

Email us at grahame.k@persephonetheatre.org.

Thank you for coming!